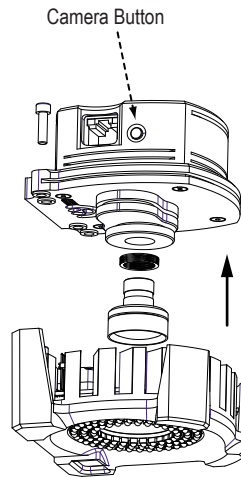


* Technical Notes

Tracking Tools or Arena software must be installed. Windows XP, Vista and 7 are supported operating systems.

* Customizable Camera Button

The side of the S250e camera features a customizable button. This button can be used to zoom in on the camera's 2D view for aiming and inspection in the software.



* Install Lens (optional)

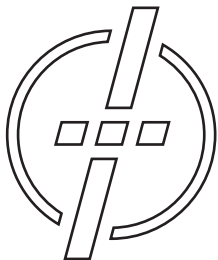
Thread the lens into included lens holder/adaptor until finger tight.

* S250e model only supports M12 lenses.

* OptiTrack M12 lenses should be installed with the included Wave Spring for secure focusing.

* Install LED Ring (optional)

If you have purchased an S250e:SLIM and S250e LED ring separately, contact support for installation details.

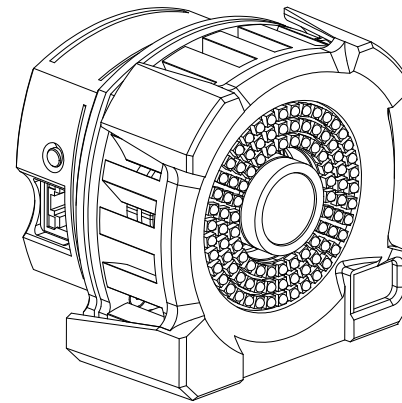


Friendly Customer Service

If you have any difficulties after reviewing the documentation, visit our website or call 1.541.753.6645 between 9AM-5PM PT.

Visit OptiTrack.com for the latest software support, sample code and product news.

OptiTrack.com

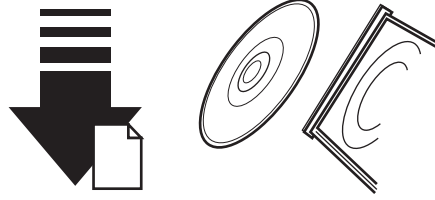


S250e
quick start guide

1. Install Software

Download the latest software installer* from the website or use software CD if included. Run the installer and follow its prompts.

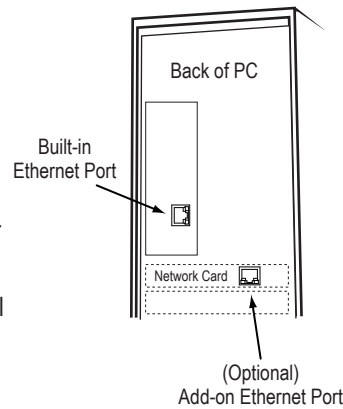
* To find compatible software, please visit OptiTrack.com.



2. Hardware and Network Setup

Guidelines

- Segment ethernet camera network traffic from the office / local area network.
 - If the computer used for capture is connected to an existing network then use a second ethernet port or add-on network card for connecting the computer to the camera network.
 - For best performance do not connect devices other than the capture computer to the camera network.
- Add-on network cards should be installed if additional ethernet ports are required.
- For connection details, see example Network Setup diagrams at right.



Setup

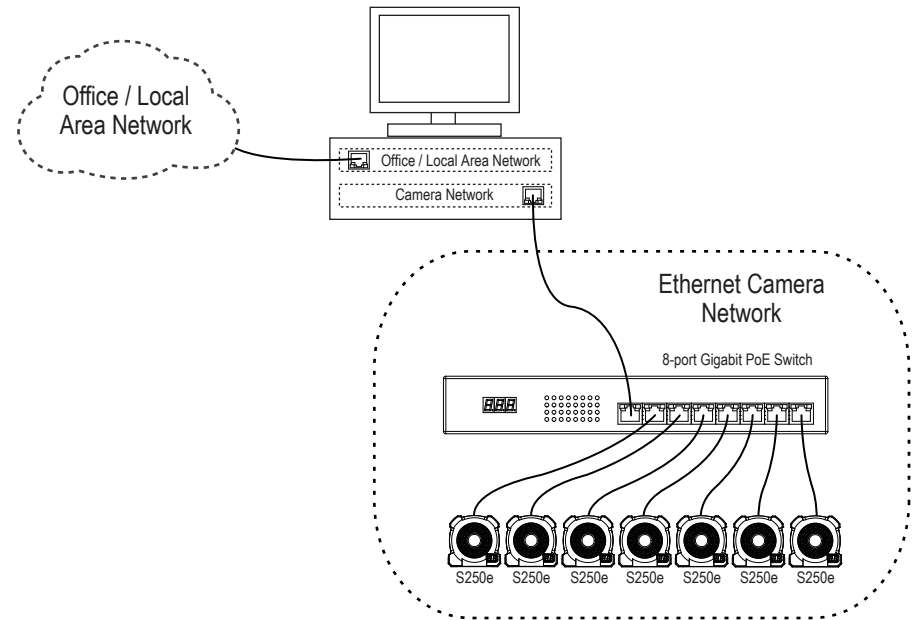
- Layout and connect ethernet PoE switches for the camera network.
- Connect the computer used for capture and the S250e cameras to the camera network.

Recommended Devices

- Qualified ethernet devices are available for purchase at OptiTrack.com. NaturalPoint does not recommend the use of cables, extenders, hubs and switches that haven't been qualified for use with OptiTrack devices.

Note: PoE switches must support 15.4 watts per ethernet port (full power).

* Network Setup: 7 cameras or fewer



* Network Setup: 8 cameras or more

